

# EcoWash EWS-25

## 25-lb Capacity Rigid Mount/100 G-Force COIN Washer/Extractor

### Features and Benefits:

- Coin or Card Ready
- Inverter Driven Motor
- Heavy-Duty Structural Tube Construction
- Stainless Steel Cabinet
- Easy to Program and Easy to Use Controls
- Load Imbalance Detection Before Spinning
- Large, Convenient Supply Dispenser
- Flexible Water Level Settings
- Ergonomic, Easy-Grip Door Handle
- 10/5 Year Limited Warranty\*

### Why Purchase ADC EcoWash?



EWS-25 COIN Washer/Extractor

### Rugged Structural Tube Construction

EcoWash rapid spin washer/extractors are constructed with a structural tube design frame in combination with a heavy-duty cast aluminum counter weight to provide superior strength and maximum stability throughout the wash cycle.

### Durable Door Safety Lock and Handle

The durable ergonomic design of the door handle combined with our Easy Lock™ door lock provides maximum convenience and safety.

### Large, Convenient Supply Dispenser

Easy to use, this large supply dispenser allows you to conveniently load your detergent, bleach and fabric softeners before starting your wash cycle.

Your local ADC independent authorized distributor



88 Carrant Road Fall River, MA 02720-4781 • 508.678.9000 • Fax: 508.678.9447 • Email: sales@amdry.com

[www.adlaundry.com](http://www.adlaundry.com)

# EcoWash EWS-25

100 G-Force Standard Spin Washer-Extractor	
Features	EWS-25
<b>DRUM</b>	
Load Capacity (lb/kg)	25 / 11.34
Drum Volume (cu. ft./liter)	3.53 / 100
Drum Diameter (in/cm)	24-3/8 / 61.97
Drum Depth (in/cm)	13 / 33.0
<b>DIMENSIONS</b>	
Width (in/cm)	28-5/16 / 71.88
Depth (in/cm)	26-5/8 / 67.62
Height (in/cm)	45-5/8 / 115.88
Weight (lb/Kg)	478 / 217
<b>DIMENSIONS WITH PACKAGING</b>	
Crated Width (in/cm)	32-1/8 / 81.59
Crated Depth (in/cm)	38-1/2 / 97.79
Crated Height (in/cm)	53-1/2 / 135.89
Crated Weight (lb/Kg)	495 / 225
<b>DOOR</b>	
Height to Bottom of Door (in/cm)	12-1/4 / 31.11
Door Opening Diameter (in/cm)	14-5/8 / 37.14
<b>POWER</b>	
Motor	0.75 kW
Heating (Electric Heated Model)	6 kW
Maximum Power (Electric Version)	6.25 kW
<b>CONNECTIONS</b>	
Water Inlet (in/cm)	3/4 / 1.91
Drain (in/cm)	3 / 7.62
<b>CYLINDER SPEED</b>	
Washing speed (r.p.m.)	53
Spinning speed (r.p.m.)	538
G-Force	100
<b>FLOOR LOADING</b>	
Static Floor Load	478 lb / 2,17 kN
Dynamic Floor Load	66 lb / 0,3 kN
Maximum Vertical Load	538 lb / 2,47 kN
Dynamic Load Frequency (Hz)	9
G Factor	100
<b>OPTION HEAT SOURCES</b>	
Steam Inlet (in/cm)	1/2 / 1.27
Electric	6 kW

\*Excludes additional 2" (5.08 cm) rear backguard protrusion

**Five-Year Limited Warranty on Parts** (Parts Only – Labor Not Included). For the first five (5) years from the date of purchase, when this commercial appliance is installed, maintained and operated according to the instructions attached to or furnished with the product, American Dryer brand of Whirlpool Corporation (hereafter "ADC") will pay for factory-specified parts or original equipment manufacturer parts to correct defects in materials or workmanship.

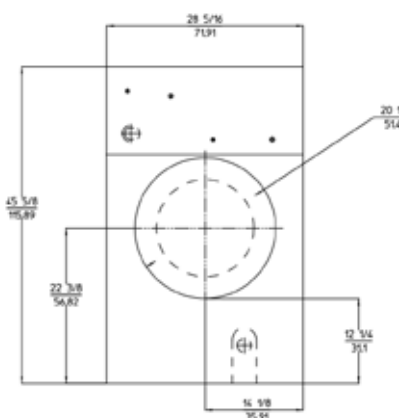
**Sixth-Through Tenth-Year Limited Warranty** (Certain Component Parts Only). In the sixth through tenth years from the date of purchase, when this commercial appliance is installed, operated and maintained according to the instructions attached to or furnished with the product, ADC will pay for factory-specified replacement parts for the following components to correct non-cosmetic defects in materials or workmanship in the parts that prevent function of the product and that existed when this commercial appliance was purchased. This is a limited 10-year warranty on the named parts only and does not include labor: outer shell, drum and shaft assembly, inner welded frame bearings and seals. See complete warranty for details.



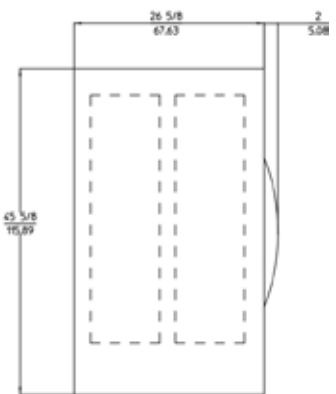
## Intuitive Micro Controls (IMC®) That Makes Washing Easy For You and Your Customers

Intuitive Micro Controls (IMC®) is our programmable microprocessor that is customizable, easy to program and easy to use. You can simplify existing programs; modify or delete the temperature and times of each phase of the cycle, as well as modify water levels to achieve maximum savings in your Laundromat. Multi vend pricing capability also enables you to maximize your Laundromat's revenue.

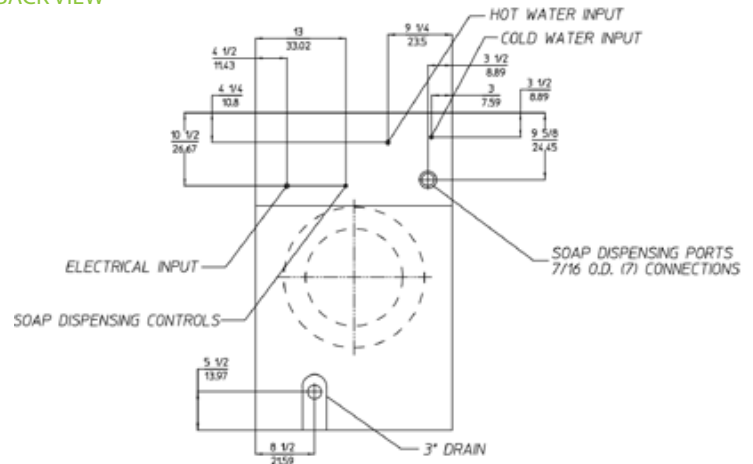
FRONT VIEW



SIDE VIEW



BACK VIEW



P/N 451049 REV 4/16

\* Specifications are subject to change without notice or obligation. Contact ADC for dimensions not shown or for clarification.