

ADC AD-115

115-lb Capacity OPL Dryer

Standard Features:

- 115-lb. capacity
- 33.10 cu. ft. basket volume
- 343,000 Btu/hr heat input and 2,100 cfm airflow
- Self-diagnostic microprocessor with patented auto-drying feature
- Steel door with gasketless glass
- Easy-to-clean lint drawer
- Fits through a standard 48" door opening
- Reversing basket is standard
- Available in gas, steam and electric heat

Optional Features:

- Stainless steel front, cabinet & basket
- S.A.F.E. (Sensor Activated Fire Extinguishing System)



AD-115 OPL Dryer

Why Purchase ADC AD-115?

Engineer-Driven Design That is Built to Last

Our dryers showcase ADC's engineer-driven approach to design. Bearings are permanently lubricated on the motor and drive system. There are no chains used at ADC; rather, we use V-belts and pulleys for smooth, quiet, and trouble-free operation. Our dryer cabinets are electrostatically powder-painted inside and out, then baked at 420-degrees fahrenheit before final assembly—ensuring the hardest surface and the longest-lasting finish in the industry.

Rugged Steel Door with Gasketless Door Glass

Our dryer doors are one solid piece of steel with gasketless glass. This eliminates the issue of glass falling out due to wear and tear on rubber gaskets that some manufacturers use to secure their glass. The security and durability that gasketless glass provides is essential to a successful laundromat operation.

Easy-to-Read, Multilingual Controls

We were the first to bring computer-operated dryers to the market and today we continue to be a leader in applying technology to dryer operation. Our years of experience along with our accessible design, easy-to-read LED screens and our user-friendly multilingual interface positions ADC as the pioneer in the laundry industry.

Your local ADC independent authorized distributor



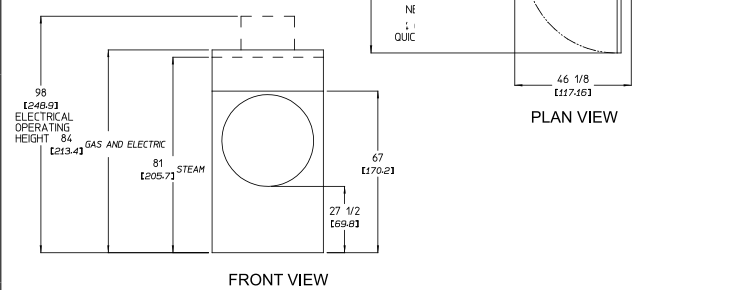
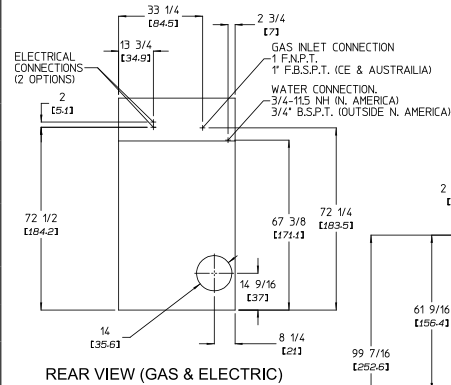
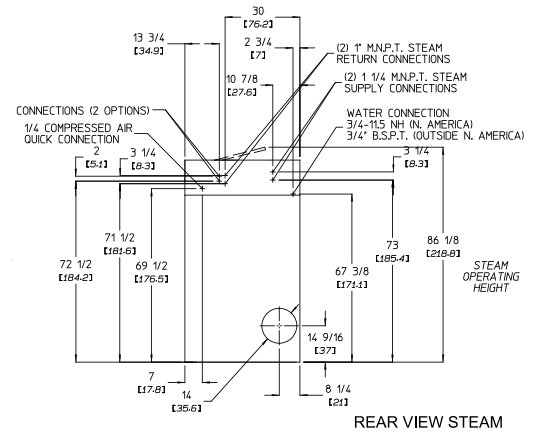
ADC AD-115

AD-115 Specifications	
Tumbler Capacity (dry weight)	115 lbs. (52.16 kg)
Tumbler Diameter	42" (106.68 cm)
Tumbler Depth	41-1/4" (104.78 cm)
Tumbler Volume	33.10 cu ft (937.29 L)
Tumbler/Drive Motor	3/4 hp (0.56 kW)
Blower/Fan Motor	3 hp (2.24 kW)
Door Opening (Diameter)	31-3/8" (79.69 cm)
Door Sill Height	27-1/2" (69.85 cm)
S.A.F.E. Water Connection	3/4"-11.5 NH (North America) 3/4" B.S.P.T. (Outside North America)
Dryers per 20'/40' Container	4 / 8
Dryers per 48'/53' Truck	9 / 10
Width	46-1/8" (117.16 cm)
Depth	63-9/16" (161.4 cm)
Height (gas/steam/electric)	84" (213.4 cm) / 86-1/8" (218.8 cm) / 98" (248.9 cm)
Airflow	60 Hz 2,100 cfm (59.47 cmm)
gas/electric/steam	50 Hz 1,750 cfm (49.55 cmm)
Exhaust Connection	14" (35.56 cm)
Voltage Available	208-575v 3ø 3,4 w 50/60 Hz
GAS MODEL:	
Approx. Net Wt.	1,260 lbs (571.53 kg)
Approx. Ship Wt.	1,400 lbs (635.03 kg)
Heat Input	343,000 btu/hr (86,435 kcal/hr)
Inlet Pipe Connection	1" F.N.P.T. 1" F.B.S.P.T. (CE and Australia Only)
ELECTRICAL MODEL:	
Approx. Net Wt.	1,260 lbs (571.53 kg)
Approx. Ship Wt.	1,400 lbs (635.03 kg)
Exhaust Connection (Diameter)	14" (35.56 cm)
Oven Size per pocket	
kW	Btu/hr (kcal/hr)
60	204,700 (51,600)
72	245,700 (61,900)
STEAM MODEL:	
Approx. Net Wt.	1,555 lbs (705.34 kg)
Approx. Ship Wt.	1,695 lbs (768.84 kg)
Steam Consumption	375 lb/hr (170.10 kg/hr)
Operating Steam Pressure	125 psi max (8.62 bar)
Exhaust Connection (Diameter)	14" (20.32 cm)
Boiler Horsepower (Normal Load)	11 Bhp
Compressed Air Volume	0.75 cfm (0.02 cmh)(2)
Supply Connection	1-1/4" M.N.P.T.
Return Connection	(2) 1" M.N.P.T.

Specifications in parentheses are metric equivalents.

9/14/10

Electrical Service Specifications					
GAS & STEAM					
SERVICE VOLTAGE	PHASE	WIRE SERVICE	APPROX AMP DRAW		CIRCUIT BREAKER
			60 Hz	50 Hz	
208	3ø	3	14.5	--	20
230	3ø	3	--	16.0	25
240	3ø	3	14.6	--	20
380	3ø	4*	--	8.7	15
400	3ø	4*	--	8.5	15
416	3ø	4*	--	9.0	15
460	3ø	3	7.8	--	15
480	3ø	3	7.8	--	15
575	3ø	3	5.8	--	15



Electrical Service Specifications

SERVICE VOLTAGE	PHASE	WIRE SERVICE	APPROX AMP DRAW		CIRCUIT BREAKER
			60 Hz	50 Hz	
60 kW Electric					
208	3ø	3	181	--	250
230	3ø	3	--	167	200
240	3ø	3	159	--	200
380	3ø	4*	--	100	125
400	3ø	4*	--	95	125
416	3ø	4*	--	92	125
460	3ø	3	83	--	125
480	3ø	3	80	--	100
575	3ø	3	66	--	100
72 kW Electric					
208	3ø	3	214	--	300
230	3ø	3	--	197	250
240	3ø	3	188	--	250
380	3ø	4*	--	118	150
400	3ø	4*	--	112	150
416	3ø	4*	--	109	150
460	3ø	3	98	--	125
480	3ø	3	94	--	125
575	3ø	3	78	--	100



QY160012 1/17

88 Currant Road, Fall River, MA 02720-4781 • 508.678.9000

www.adclaundry.com